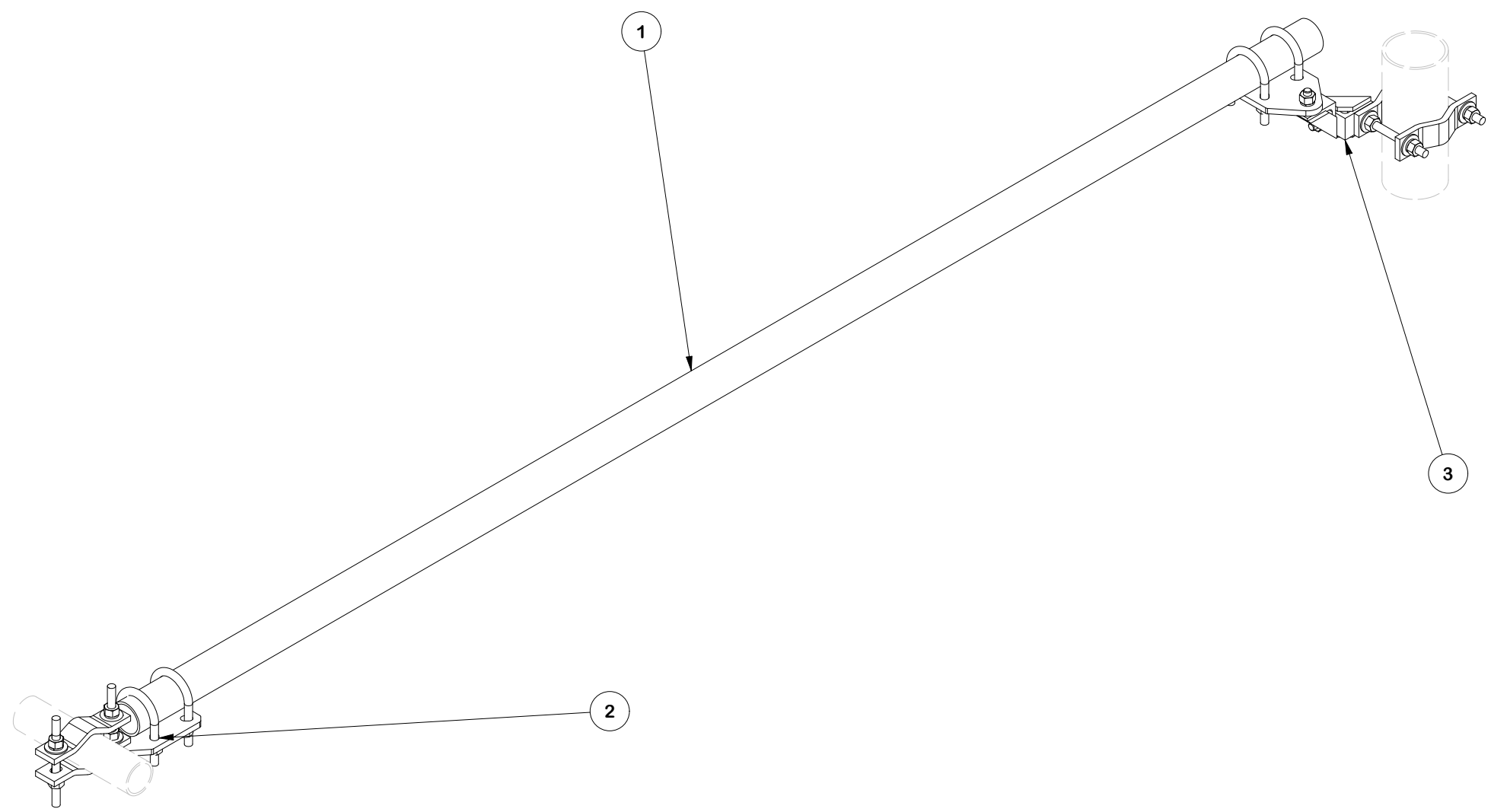


PARTS LIST						
ITEM	QTY	PART NO.	PART DESCRIPTION	LENGTH	UNIT WT.	NET WT.
1	1	P30126	2-7/8" O.D. X 126" SCH. 40 PIPE (A53 Gr.B Fy=35 ksi min.)	126 in	64.63	64.63
2	1	SPTBU-F	UNIVERSAL SLIDING PIPE TIE BACK ASSEMBLY (FRONT CONNECTION ONLY)		19.26	19.26
3	1	SPTBU-B	UNIVERSAL SLIDING PIPE TIE BACK ASSEMBLY (BACK CONNECTION ONLY)		33.54	33.54
					TOTAL WT. #	117.42



A	REVISED DRAWING LAYOUT UPDATED X-SPTB TO X-SPTB-U		JET	8/8/2024
----------	--	--	-----	----------

TOLERANCE NOTES
 TOLERANCES ON DIMENSIONS, UNLESS OTHERWISE NOTED ARE:
 SAWED, SHEARED AND GAS CUT EDGES ($\pm 0.030"$)
 DRILLED AND GAS CUT HOLES ($\pm 0.030"$) - NO CONING OF HOLES
 LASER CUT EDGES AND HOLES ($\pm 0.010"$) - NO CONING OF HOLES
 BENDS AND ANGLES ARE $\pm 1/2$ DEGREE
 ALL OTHER MACHINING ($\pm 0.030"$)
 ALL OTHER ASSEMBLY ($\pm 0.060"$)

PATENT INFORMATION: WWW.SITEPRO1.COM/PATENTS

PROPRIETARY NOTE:
 THE DATA AND TECHNIQUES CONTAINED IN THIS DRAWING ARE PROPRIETARY INFORMATION OF VALMONT INDUSTRIES AND CONSIDERED A TRADE SECRET. ANY USE OR DISCLOSURE WITHOUT THE CONSENT OF VALMONT INDUSTRIES IS STRICTLY PROHIBITED.

DESCRIPTION			
SLIDING TIE-BACK 2-7/8" OD PIPE ASSEMBLY			
CPD NO.	DRAWN BY	ENG. APPROVAL	
	JET 7/30/2024		
CLASS	SUB	DRAWING USAGE	CHECKED BY
01	01	CUSTOMER	



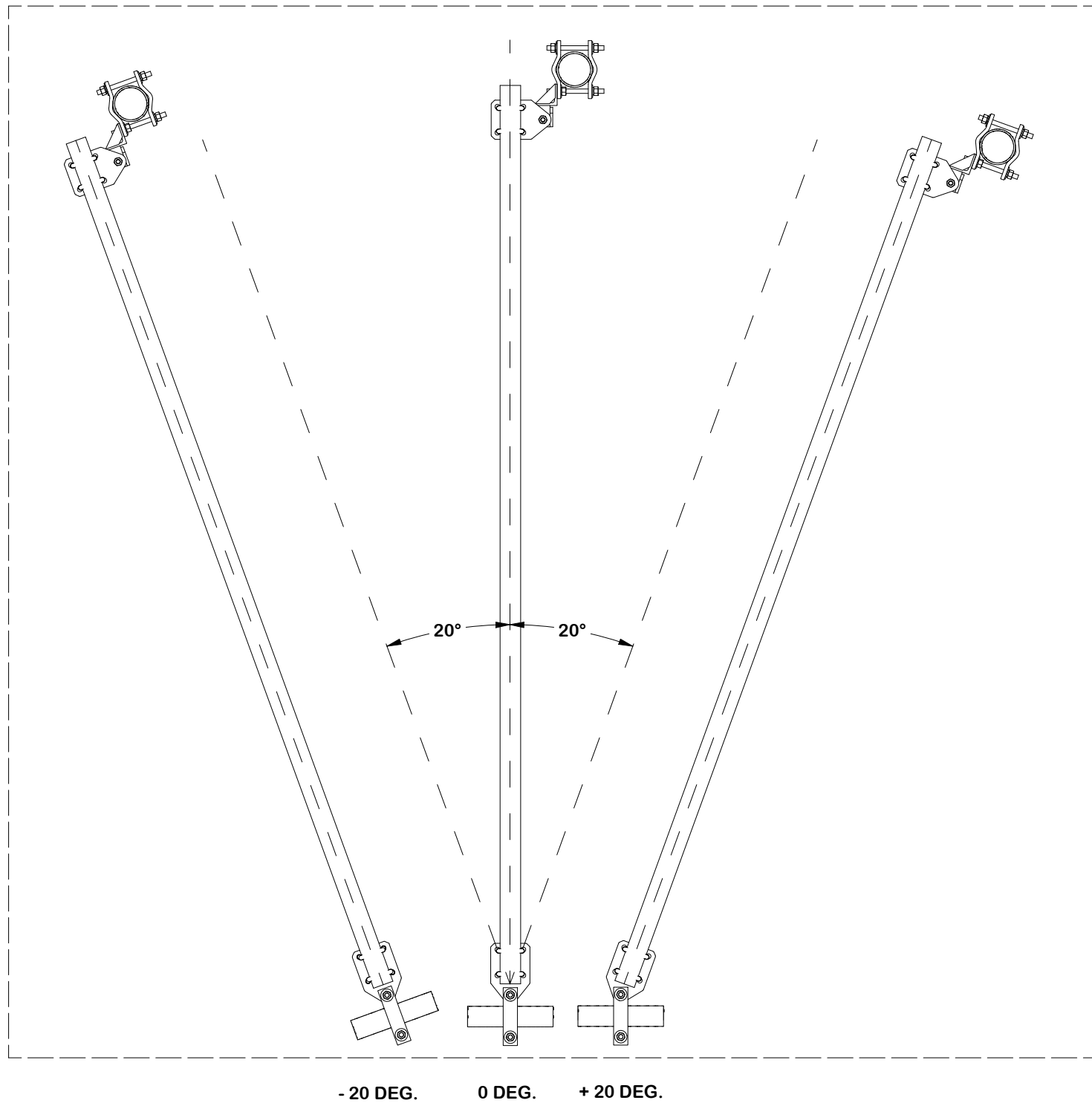
A valmont COMPANY

Engineering Support Team:
sp1engineering@valmont.com

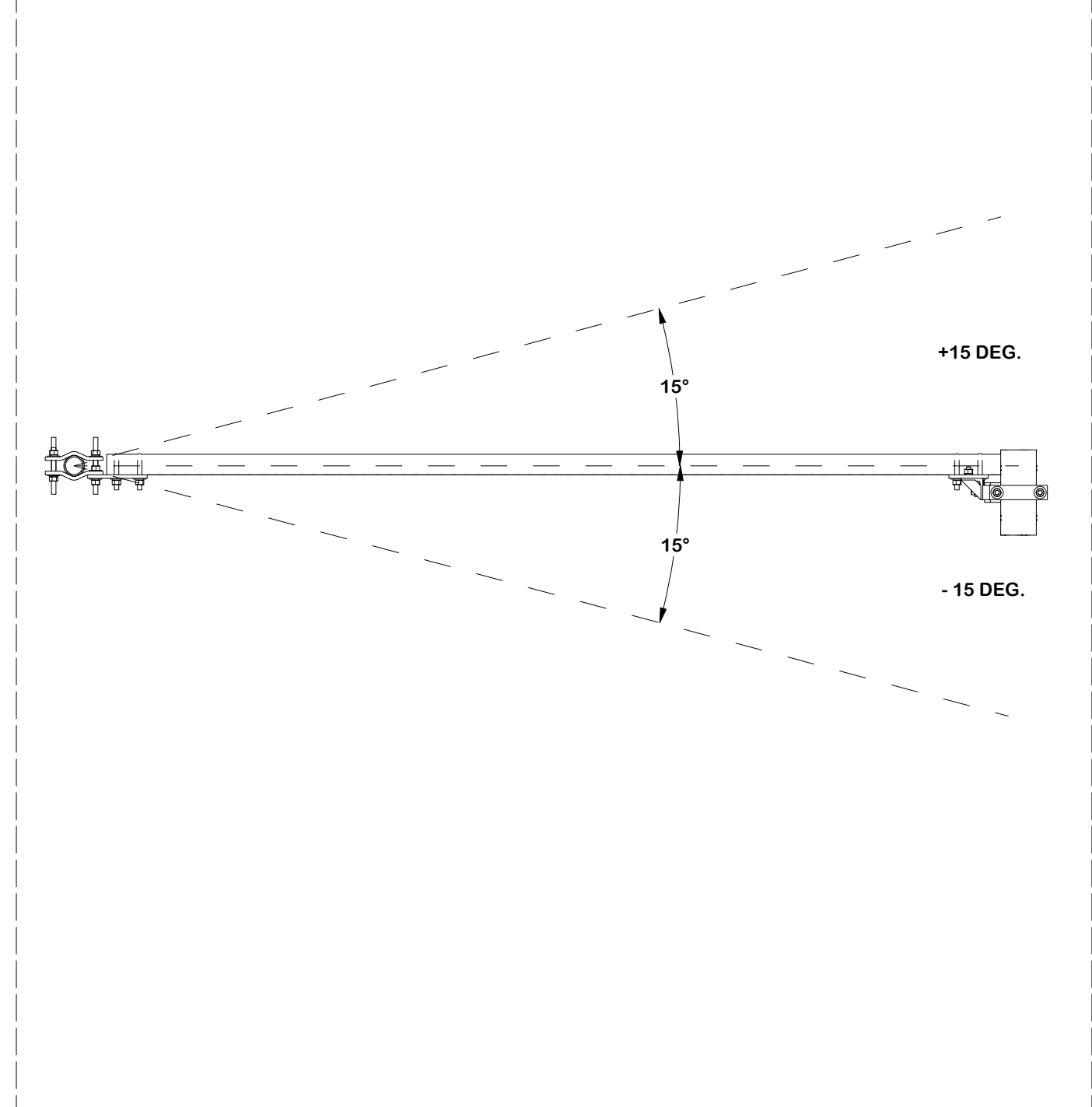
PART NO.	SPTB278
DWG. NO.	SPTB278

REV	DESCRIPTION OF REVISIONS	CPD	BY	DATE
REVISION HISTORY				

RECOMMENDED HORIZONTAL ADJUSTMENT



RECOMMENDED VERTICAL ADJUSTMENT



TOLERANCE NOTES

TOLERANCES ON DIMENSIONS, UNLESS OTHERWISE NOTED ARE:
 SAWED, SHEARED AND GAS CUT EDGES ($\pm 0.030"$)
 DRILLED AND GAS CUT HOLES ($\pm 0.030"$) - NO CONING OF HOLES
 LASER CUT EDGES AND HOLES ($\pm 0.010"$) - NO CONING OF HOLES
 BENDS AND ANGLES ARE $\pm 1/2$ DEGREE
 ALL OTHER MACHINING ($\pm 0.030"$)
 ALL OTHER ASSEMBLY ($\pm 0.060"$)

PATENT INFORMATION: WWW.SITEPRO1.COM/PATENTS

PROPRIETARY NOTE:
 THE DATA AND TECHNIQUES CONTAINED IN THIS DRAWING ARE PROPRIETARY INFORMATION OF VALMONT INDUSTRIES AND CONSIDERED A TRADE SECRET. ANY USE OR DISCLOSURE WITHOUT THE CONSENT OF VALMONT INDUSTRIES IS STRICTLY PROHIBITED.

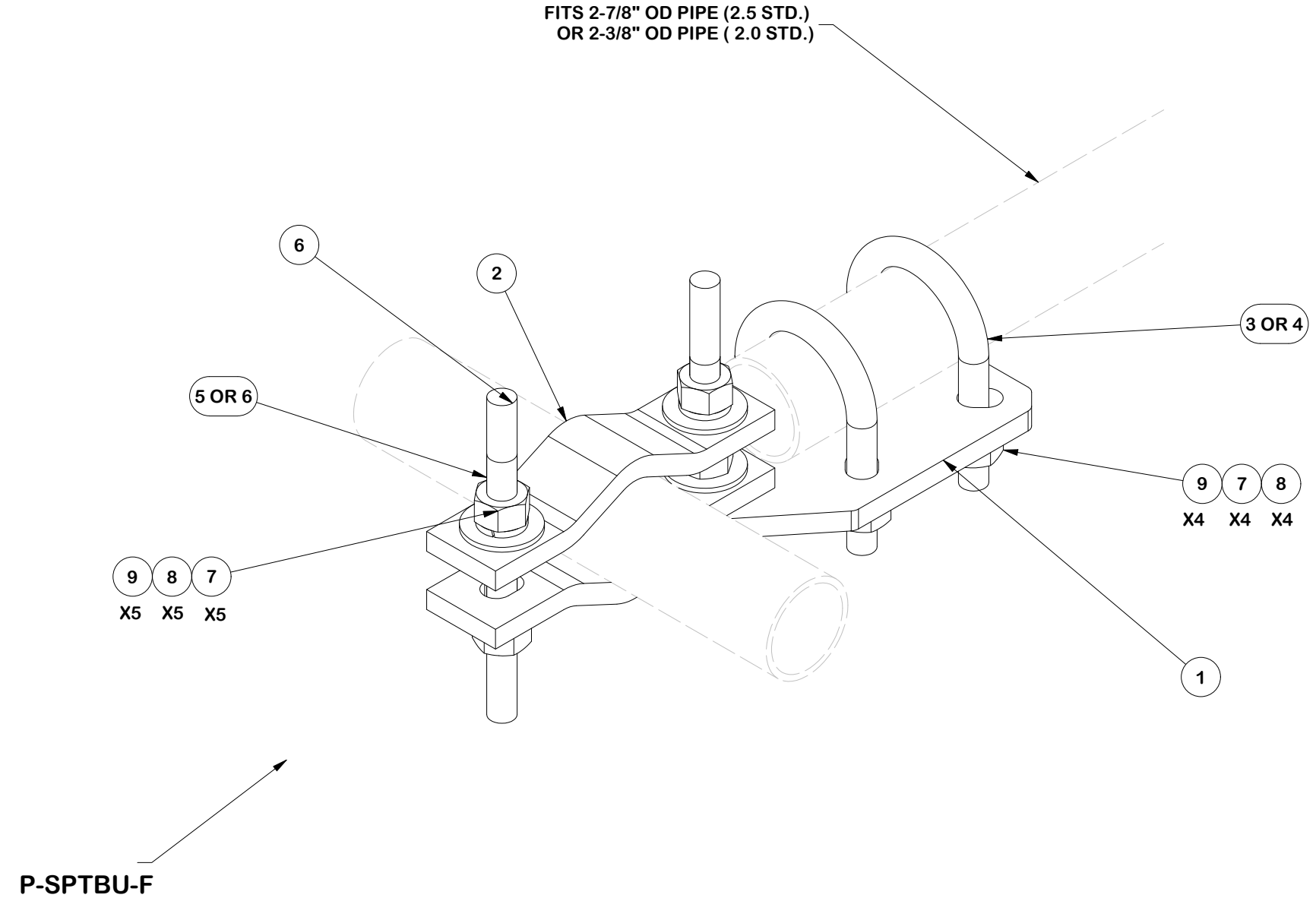
DESCRIPTION
SLIDING TIE-BACK 2-7/8" OD PIPE ASSEMBLY

SITE PRO 1
 A valmont COMPANY
 Engineering Support Team:
 sp1engineering@valmont.com

CPD NO.	DRAWN BY JET 7/30/2024	ENG. APPROVAL
CLASS 01	SUB 01	DRAWING USAGE CUSTOMER
CHECKED BY		

PART NO. SPTB278
DWG. NO. SPTB278

PARTS LIST						
ITEM	QTY	PART NO.	PART DESCRIPTION	LENGTH	UNIT WT.	NET WT.
1	1	X-SPTB-U	SLIDING PIPE TIE BACK PLATE	5 1/2 in	5.58	5.58
2	2	DCP	1/2" THICK, 5-3/4" CNTR TO CENTER CLAMP HALF	8 1/8 in	2.36	4.72
3	2	X-UB5258	5/8 X 2-5/8" X 4-1/2" X 2" U-BOLT	4 1/2 in	1.06	2.12
4	2	X-UB5300	5/8" X 3" X 5-1/4" X 2-1/2" U-BOLT	5 1/4 in	1.22	2.43
5	2	G5804	5/8" x 4" HDG HEX BOLT GR5		0.44	0.89
6	2	G58R-8	5/8" X 8" THREADED ROD (HDG.)		0.74	1.48
7	9	G58LW	5/8" HDG LOCKWASHER		0.03	0.23
8	9	G58FW	5/8" HDG USS FLATWASHER	1/8 in	0.07	0.63
9	9	G58NUT	5/8" HDG HEAVY 2H HEX NUT		0.13	1.17
TOTAL WT. #						19.26




TOLERANCE NOTES

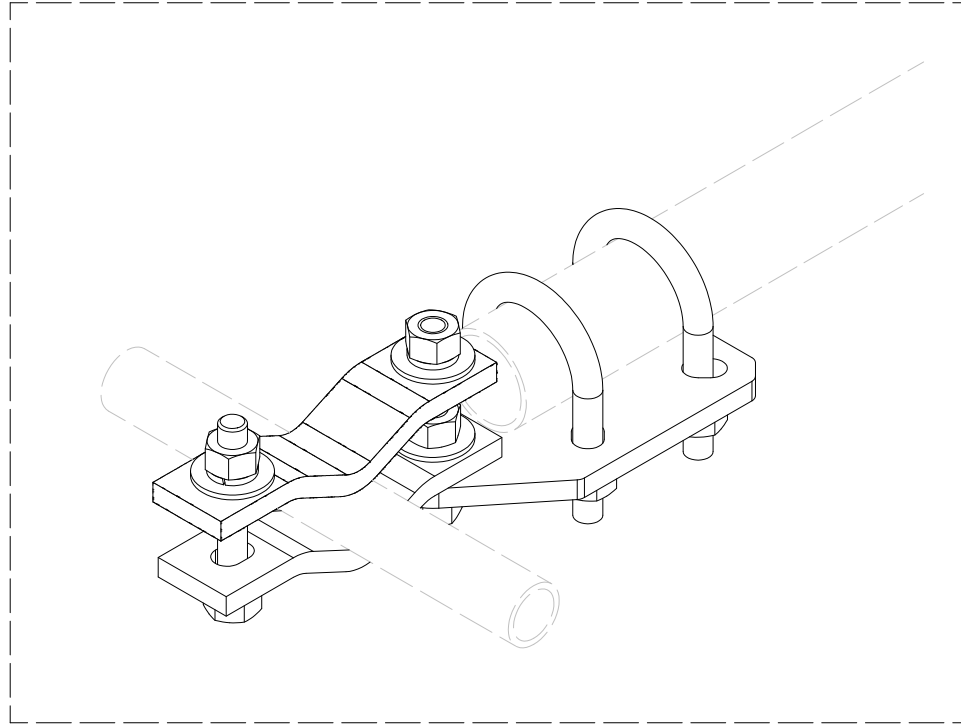
TOLERANCES ON DIMENSIONS, UNLESS OTHERWISE NOTED ARE:
 SAWED, SHEARED AND GAS CUT EDGES ($\pm 0.030"$)
 DRILLED AND GAS CUT HOLES ($\pm 0.030"$) - NO CONING OF HOLES
 LASER CUT EDGES AND HOLES ($\pm 0.010"$) - NO CONING OF HOLES
 BENDS AND ANGLES ARE $\pm 1/2$ DEGREE
 ALL OTHER MACHINING ($\pm 0.030"$)
 ALL OTHER ASSEMBLY ($\pm 0.060"$)

PATENT INFORMATION: WWW.SITEPRO1.COM/PATENTS

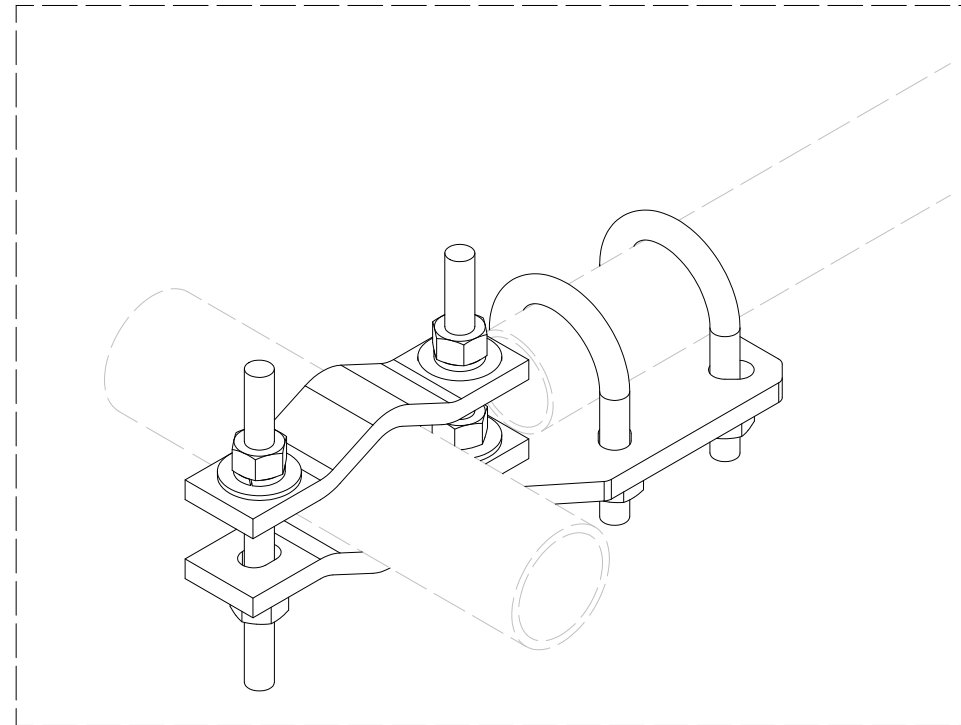
PROPRIETARY NOTE:
 THE DATA AND TECHNIQUES CONTAINED IN THIS DRAWING ARE PROPRIETARY INFORMATION OF VALMONT INDUSTRIES AND CONSIDERED A TRADE SECRET. ANY USE OR DISCLOSURE WITHOUT THE CONSENT OF VALMONT INDUSTRIES IS STRICTLY PROHIBITED.

DESCRIPTION			
SLIDING TIE-BACK 2-7/8" OD PIPE ASSEMBLY			
CPD NO.	DRAWN BY	ENG. APPROVAL	
	JET 7/30/2024		
CLASS	SUB	DRAWING USAGE	CHECKED BY
01	01	CUSTOMER	

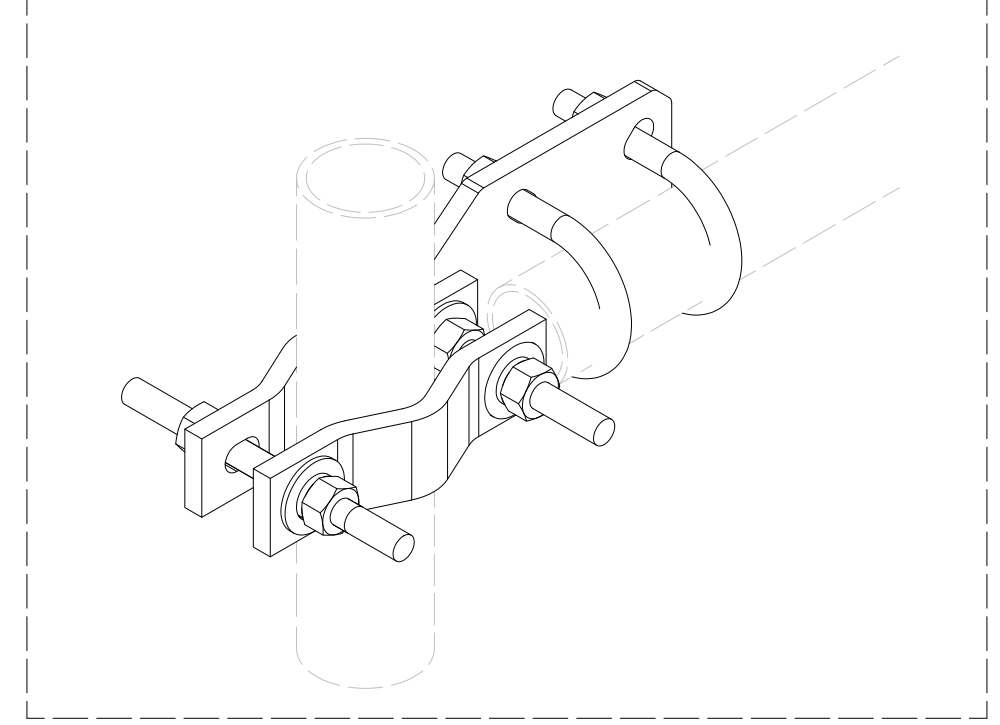
 A valmont COMPANY	Engineering Support Team: sp1engineering@valmont.com
PART NO.	SPTBU-F
DWG. NO.	SPTB278



SMALL ATTACHMENT 1-1/2" TO 2-3/8"
 NOTE: FLIP HALF BACK CLAMP



ATTACHMENT 2-3/8" TO 5"
 HORIZONTAL ORIENTATION



ATTACHMENT 2-3/8" TO 5"
 VERTICAL ORIENTATION

FRONT FACE CONFIGURATIONS

TOLERANCE NOTES

TOLERANCES ON DIMENSIONS, UNLESS OTHERWISE NOTED ARE:
 SAWED, SHEARED AND GAS CUT EDGES ($\pm 0.030"$)
 DRILLED AND GAS CUT HOLES ($\pm 0.030"$) - NO CONING OF HOLES
 LASER CUT EDGES AND HOLES ($\pm 0.010"$) - NO CONING OF HOLES
 BENDS AND ANGLES ARE $\pm 1/2$ DEGREE
 ALL OTHER MACHINING ($\pm 0.030"$)
 ALL OTHER ASSEMBLY ($\pm 0.060"$)

PATENT INFORMATION: WWW.SITEPRO1.COM/PATENTS

PROPRIETARY NOTE:
 THE DATA AND TECHNIQUES CONTAINED IN THIS DRAWING ARE PROPRIETARY INFORMATION OF VALMONT INDUSTRIES AND CONSIDERED A TRADE SECRET. ANY USE OR DISCLOSURE WITHOUT THE CONSENT OF VALMONT INDUSTRIES IS STRICTLY PROHIBITED.

DESCRIPTION
SLIDING TIE-BACK 2-7/8" OD PIPE ASSEMBLY

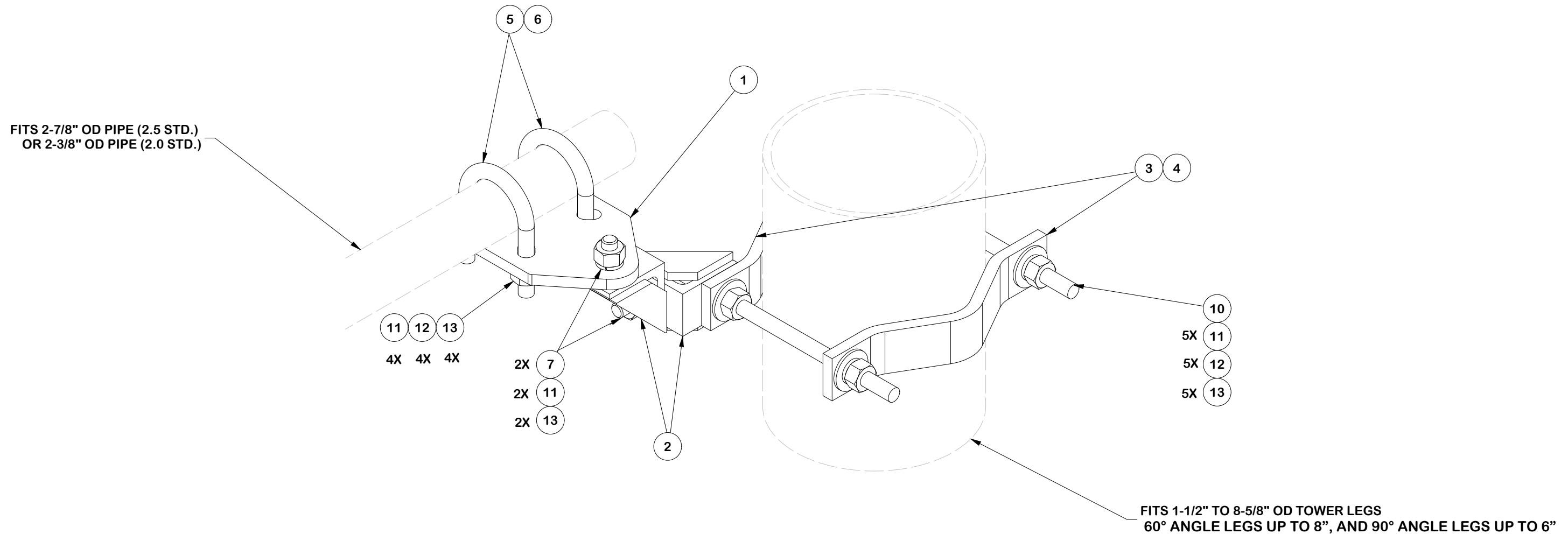


Engineering Support Team:
 sp1engineering@valmont.com

CPD NO.	DRAWN BY JET 7/30/2024	ENG. APPROVAL
CLASS 01	SUB 01	DRAWING USAGE CUSTOMER
CHECKED BY		

PART NO. SPTBU-F
DWG. NO. SPTB278

PARTS LIST						
ITEM	QTY	PART NO.	PART DESCRIPTION	LENGTH	UNIT WT.	NET WT.
1	1	X-SPTB-U	SLIDING PIPE TIE BACK PLATE	5 1/2 in	5.58	5.58
2	2	X-TBCA	TIE BACK CLIP ANGLE		2.01	4.01
3	2	MCP	CLAMP HALF 1/2" THICK, 11-5/8" LONG	12 1/16 in	3.59	7.19
4	2	DCP	1/2" THICK, 5-3/4" CENTER TO CENTER CLAMP HALF	8 1/8 in	2.36	4.72
5	2	X-UB5258	5/8 X 2-5/8" X 4-1/2" X 2" U-BOLT	4 1/2 in	1.06	2.12
6	2	X-UB5300	5/8" X 3" X 5-1/4" X 2-1/2" U-BOLT	5 1/4 in	1.22	2.43
7	2	G5802	5/8" x 2" HDG HEX BOLT GR5		0.27	0.54
8	2	G5804	5/8" x 4" HDG HEX BOLT GR5		0.44	0.89
9	2	G58R-8	5/8" X 8" THREADED ROD (HDG.)		0.74	1.48
10	2	G58R-12	5/8" x 12" THREADED ROD (HDG.)		1.05	2.09
11	11	G58LW	5/8" HDG LOCKWASHER		0.03	0.29
12	11	G58FW	5/8" HDG USS FLATWASHER	1/8 in	0.07	0.78
13	11	G58NUT	5/8" HDG HEAVY 2H HEX NUT		0.13	1.43
					TOTAL WT. #	33.54



P-SPTBU-B

TOLERANCE NOTES

TOLERANCES ON DIMENSIONS, UNLESS OTHERWISE NOTED ARE:
 SAWED, SHEARED AND GAS CUT EDGES ($\pm 0.030"$)
 DRILLED AND GAS CUT HOLES ($\pm 0.030"$) - NO CONING OF HOLES
 LASER CUT EDGES AND HOLES ($\pm 0.010"$) - NO CONING OF HOLES
 BENDS AND ANGLES ARE $\pm 1/2$ DEGREE
 ALL OTHER MACHINING ($\pm 0.030"$)
 ALL OTHER ASSEMBLY ($\pm 0.060"$)

PATENT INFORMATION: WWW.SITEPRO1.COM/PATENTS

PROPRIETARY NOTE:
 THE DATA AND TECHNIQUES CONTAINED IN THIS DRAWING ARE PROPRIETARY INFORMATION OF VALMONT INDUSTRIES AND CONSIDERED A TRADE SECRET. ANY USE OR DISCLOSURE WITHOUT THE CONSENT OF VALMONT INDUSTRIES IS STRICTLY PROHIBITED.

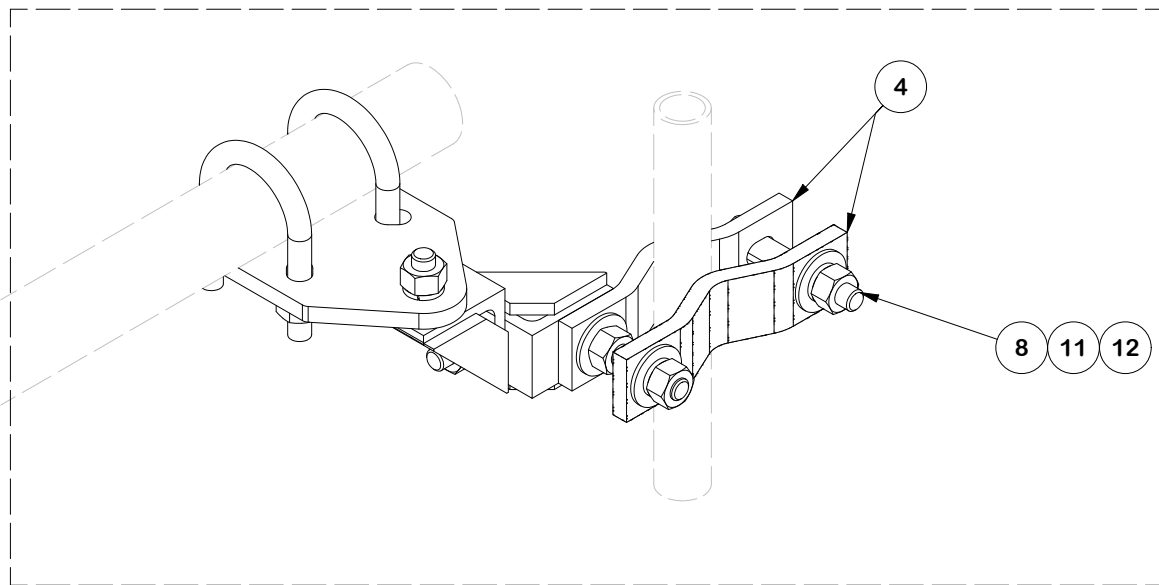
DESCRIPTION
SLIDING TIE-BACK 2-7/8" OD PIPE ASSEMBLY

CPD NO.	DRAWN BY JET 7/30/2024	ENG. APPROVAL
CLASS 01	SUB 01	DRAWING USAGE CUSTOMER
CHECKED BY		

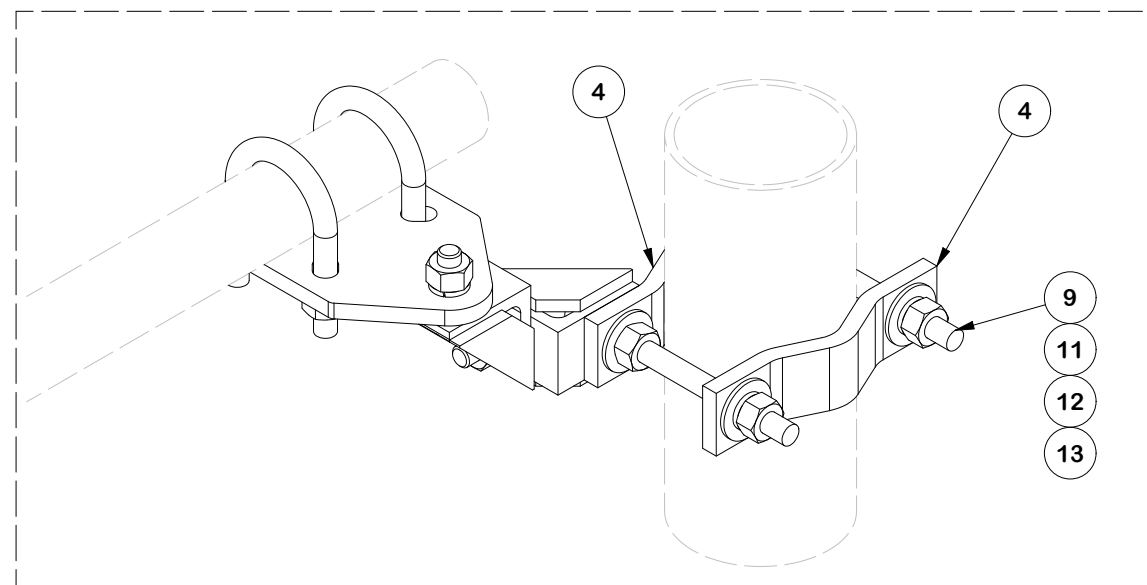


Engineering Support Team:
 sp1engineering@valmont.com

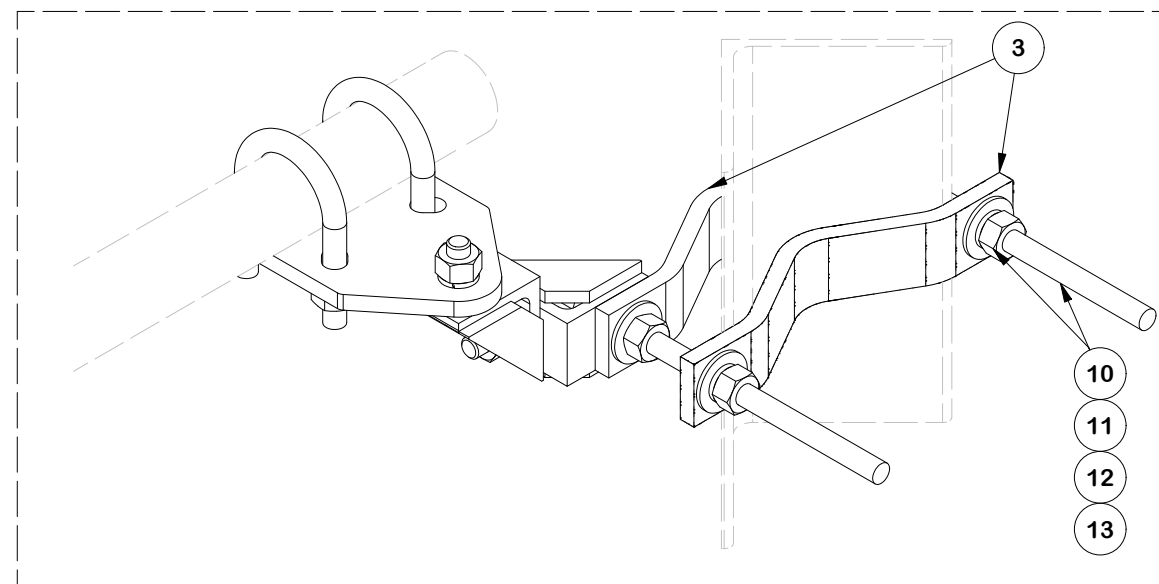
PART NO. SPTBU-B	PAGE 5 OF 6
DWG. NO. SPTB278	



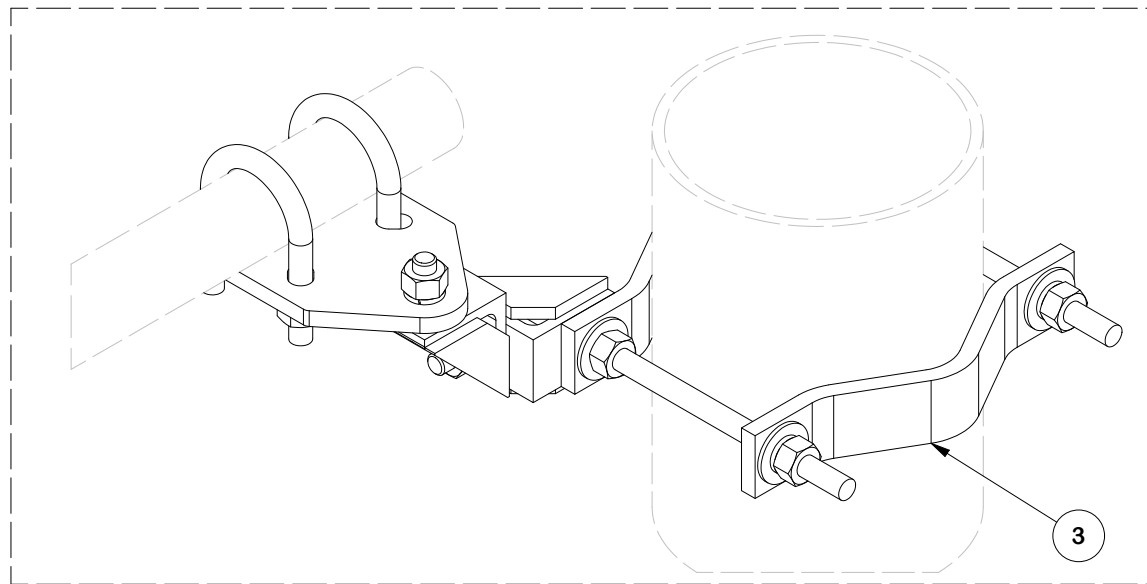
SMALL LEGS 1-1/2" TO 2-3/8"
NOTE: FLIP HALF BACK CLAMP



MEDIUM LEGS 2-7/8" TO 5"
NOTE: FLIP HALF BACK CLAMP FOR ANGLE



LARGE LEGS UP TO 6" 90 DEG. 8" 60 DEG
NOTE: FLIP HALF BACK CLAMP



LARGE LEGS 5" TO 8-5/8" OD

TOWER LEG CONFIGURATIONS

TOLERANCE NOTES

TOLERANCES ON DIMENSIONS, UNLESS OTHERWISE NOTED ARE:
 SAWED, SHEARED AND GAS CUT EDGES ($\pm 0.030"$)
 DRILLED AND GAS CUT HOLES ($\pm 0.030"$) - NO CONING OF HOLES
 LASER CUT EDGES AND HOLES ($\pm 0.010"$) - NO CONING OF HOLES
 BENDS AND ANGLES ARE $\pm 1/2$ DEGREE
 ALL OTHER MACHINING ($\pm 0.030"$)
 ALL OTHER ASSEMBLY ($\pm 0.060"$)

PATENT INFORMATION: WWW.SITEPRO1.COM/PATENTS

PROPRIETARY NOTE:
 THE DATA AND TECHNIQUES CONTAINED IN THIS DRAWING ARE PROPRIETARY INFORMATION OF VALMONT INDUSTRIES AND CONSIDERED A TRADE SECRET. ANY USE OR DISCLOSURE WITHOUT THE CONSENT OF VALMONT INDUSTRIES IS STRICTLY PROHIBITED.

DESCRIPTION
SLIDING TIE-BACK 2-7/8" OD PIPE ASSEMBLY



Engineering Support Team:
 sp1engineering@valmont.com

CPD NO.	DRAWN BY	ENG. APPROVAL
	JET 7/30/2024	
CLASS	SUB	DRAWING USAGE
01	01	CUSTOMER
		CHECKED BY

PART NO.	SPTBU-B
DWG. NO.	SPTB278